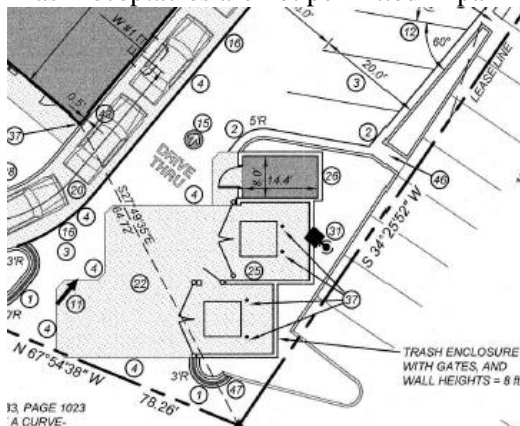


To: Brian Soltz, Commercial Site Design, PLLC.
From: Pat O'Mahony, Associate Planner; 910-341-0189
CC: File;
Date: 11/22/2019
Re: McDonalds – Gordon Road Plan Rev. 2

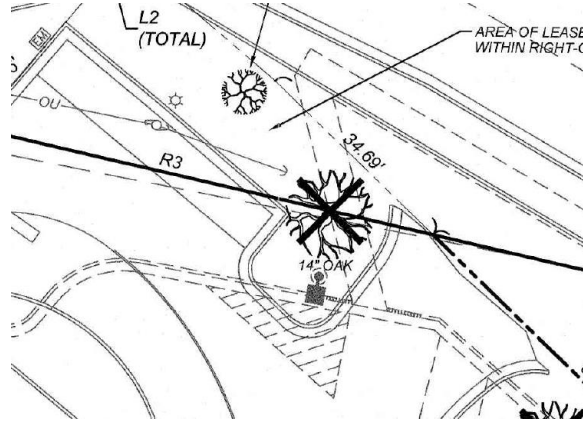
The following is a list of comments for review from planning regarding the project. Please provide your corrections as listed below. Additional review will be required once all the needed documents have been provided. Items or documents not provided on initial submission will be subject to further review. Please contact me for any further questions.

Landscape Plan Comments:

- Tree Mitigation and Credit for Preservation
 - Hardwood trees over 8" DBH and flowering trees over 4" DBH require mitigation. The total number of replacement trees shall be determined for regulated trees removed by multiplying the total DBH of the removed regulated tree(s) by the percentage for the type of tree in Table IV and dividing by three (3). See Sec. 18-460c.
 - For tree preservation credit calculations, see Sec. 18-448 (Table 1).
 - Currently, with a total DBH of 49" for all regulated trees removed, 16 trees would be required for mitigation. The preservation of the 16" live oak allows for 3 tree credits, equaling a total of 13 trees required for mitigation. Please show calculations in a table and update to include revisions to plan that impact tree preservation/removal.
- Show the Critical Root Zone (CRZ) of all preserved trees. This is shown at a 1" DBH = 1' CRZ ratio (ex. 15" DBH live oak = 15' CRZ). In no case shall more than 40% of the CRZ be disturbed (Sec. 18-458).
- Trash receptacles are not permitted in parking island



- The note regarding an exception for foundation plantings on the drive-thru side can be removed. No exception necessary.
- Parking lot plan with calculations (Sec. 18-481):
 - **Comment: Shade trees are required at the end of all parking rows. No shade tree is provided at the end of this parking row. The existing oak should be preserved and the sidewalk connection shall be re-routed to preserve the existing tree. The pedestrian connection can be incorporated into the parking island. Up to fifteen (15) percent of a landscaped island may be devoted to pedestrian walkways, as needed.**



- Contact phone number should be Planning main line: 910-254-0900