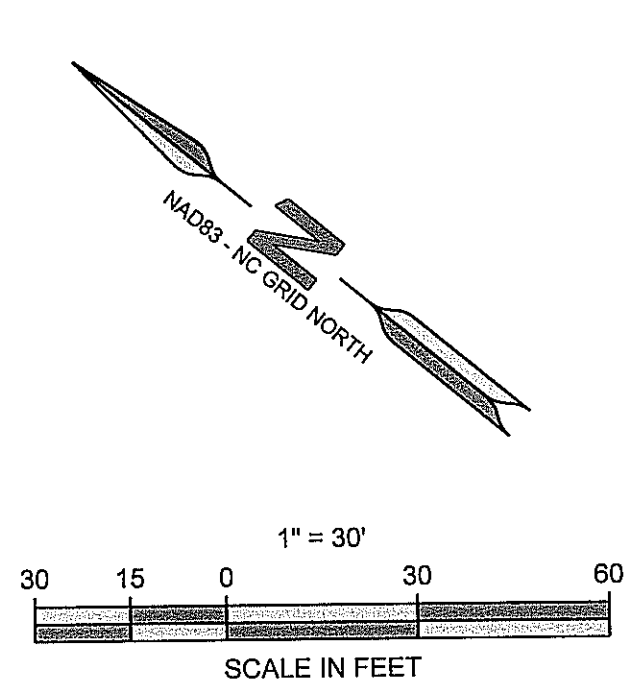
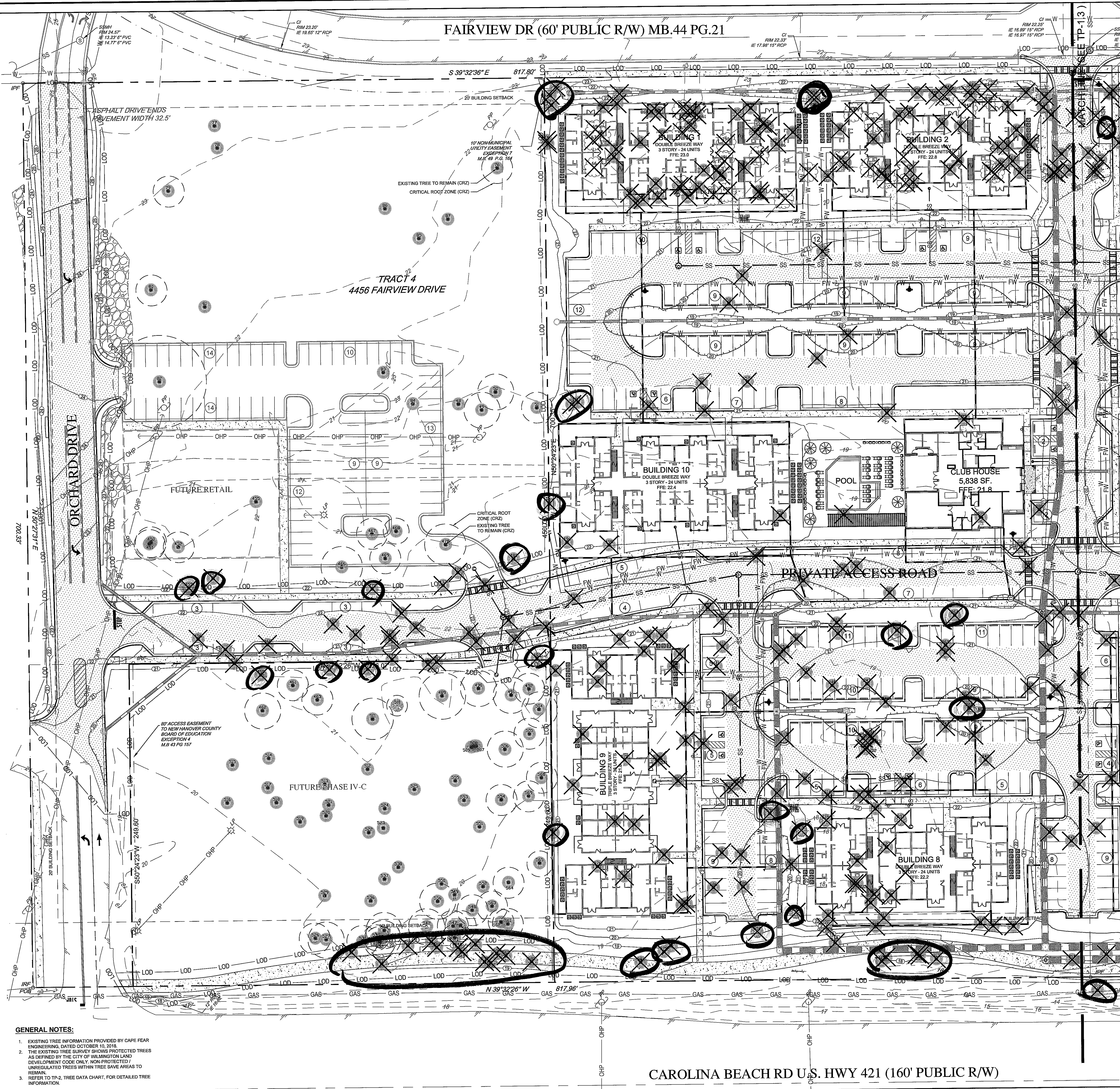


ENGINEER:
FORESITE
 group
 Foresite Group, Inc.
 3740 Davinci Ct.
 Suite 100
 Peachtree Corners, GA 30092
 www.fg-inc.net
 o 770.368.1399
 f 770.368.1944

TREE LEGEND

	BRADFORD PEAR
	CHERRY
	GUM
	MAGNOLIA
	OAK
	PINE
	EXISTING TREE TO BE REMOVED



CITY OF WILMINGTON APPROVALS

STORMWATER MANAGEMENT PLAN APPROVED
 CITY OF WILMINGTON ENGINEERING DEPARTMENT
 DATE _____ PERMIT # _____
 SIGNED _____

For each utility cut of City streets, a \$325 permit shall be required from the City prior to occupancy and/or project acceptance.

Approved Construction Plan

Name	Date
Planning	
Public Utilities	
Traffic	
Fire	

- GENERAL NOTES:**
- EXISTING TREE INFORMATION PROVIDED BY CAPE FEAR ENGINEERING, DATED OCTOBER 10, 2018.
 - THE EXISTING TREE SURVEY SHOWS PROTECTED TREES AS DEFINED BY THE CITY OF WILMINGTON LAND DEVELOPMENT CODE ONLY. NON-PROTECTED/UNREGULATED TREES WITHIN TREE SAVE AREAS TO REMAIN.
 - REFER TO TP-2, TREE DATA CHART, FOR DETAILED TREE INFORMATION.

DEVELOPER:

 CONTACT:

PROJECT:
ANSLEY PARK
 4456 & 4544 FAIRVIEW DRIVE
 WILMINGTON, NC 28412

SEAL:

REVISIONS: _____ DATE _____

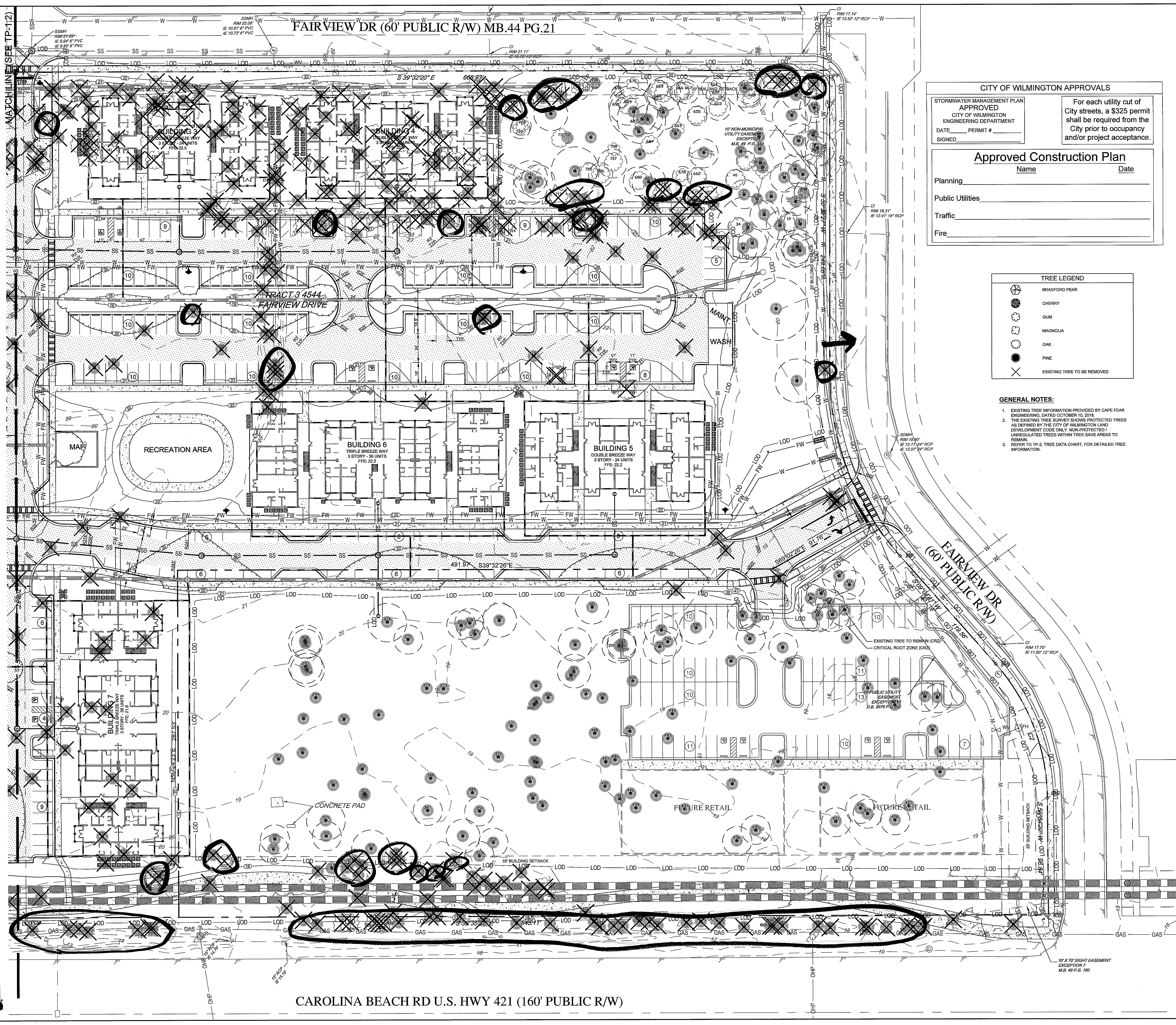
REVISIONS	DATE

PROJECT MANAGER: DMS
 DRAWING BY: CAM
 JURISDICTION: WILMINGTON, NC
 DATE: DECEMBER 28, 2018
 SCALE: 1" = 30'
 TITLE:

TREE REMOVAL PLAN (WEST)

SHEET NUMBER:
TP-1.2

COMMENTS: PRELIMINARY TRC SUBMITTAL
 JOB FILE NUMBER: 038.153



FAIRVIEW DR (60' PUBLIC R/W) MB.44 PG.21

TRACT 3 4544
FAIRVIEW DRIVE

RECREATION AREA

BUILDING 6
TRIPLE BREEZE WAY
3 STORY - 24 UNITS
FFE: 22.2

BUILDING 5
DOUBLE BREEZE WAY
3 STORY - 24 UNITS
FFE: 22.2

BUILDING 7
TRIPLE BREEZE WAY
3 STORY - 24 UNITS
FFE: 24.1

BUILDING 3
TRIPLE BREEZE WAY
3 STORY - 24 UNITS
FFE: 22.2

BUILDING 4
TRIPLE BREEZE WAY
3 STORY - 24 UNITS
FFE: 22.2

CONCRETE PAD

FUTURE RETAIL

FUTURE RETAIL

CAROLINA BEACH RD U.S. HWY 421 (160' PUBLIC R/W)

CITY OF WILMINGTON APPROVALS

STORMWATER MANAGEMENT PLAN
APPROVED
CITY OF WILMINGTON
ENGINEERING DEPARTMENT
DATE: _____ PERMIT # _____
SIGNED: _____

For each utility cut of City streets, a \$325 permit shall be required from the City prior to occupancy and/or project acceptance.

Approved Construction Plan

Name: _____ Date: _____

Planning: _____
Public Utilities: _____
Traffic: _____
Fire: _____

TREE LEGEND

	BRADFORD PEAR
	CHERRY
	GUM
	MAGNOLIA
	OAK
	PINE
	EXISTING TREE TO BE REMOVED

- GENERAL NOTES:
- EXISTING TREE INFORMATION PROVIDED BY CAPE FEAR ENGINEERING, DATED OCTOBER 19, 2016.
 - THE EXISTING TREE SURVEY SHOWS PROTECTED TREES AS DEFINED BY THE CITY OF WILMINGTON LAND DEVELOPMENT CODE ONLY. NON-PROTECTED / UNREGULATED TREES WITHIN TREE SAVE AREAS TO REMAIN.
 - REFER TO TP-2, TREE DATA CHART, FOR DETAILED TREE INFORMATION.

ENGINEER:
FORESITE group
ForeSite Group, Inc.
3740 Davinci Ct.
Suite 100
Peachtree Corners, GA 30092
w | www.fs-inc.net
o | 770.368.1399
f | 770.368.1944

DEVELOPER:

CONTACT:

PROJECT:
ANSLEY PARK
4456 & 4544 FAIRVIEW DRIVE
WILMINGTON, NC 28412

SEAL:

REVISIONS: _____ DATE: _____

PROJECT MANAGER: DMS
DRAWING BY: CAM
JURISDICTION: WILMINGTON, NC
DATE: DECEMBER 28, 2018
SCALE: 1" = 30'
TITLE:

PROJECT MANAGER: DMS
DRAWING BY: CAM
JURISDICTION: WILMINGTON, NC
DATE: DECEMBER 28, 2018
SCALE: 1" = 30'
TITLE: **TREE REMOVAL PLAN (EAST)**
SHEET NUMBER: **TP-1.3**
COMMENTS: PRELIMINARY TRC SUBMITTAL
JOB/FIELD NUMBER: 038.153

