

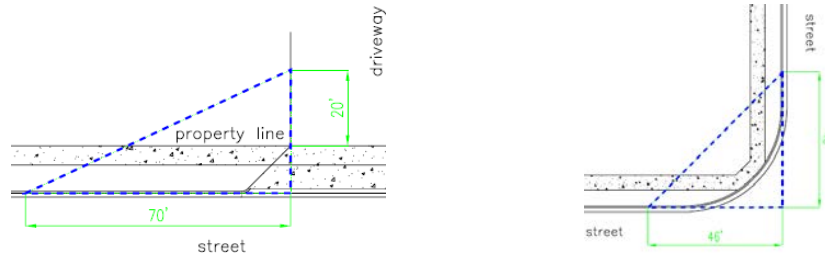
DATE: 11.13.2018
TO: ProTrak
FROM: Mitesh Baxi
Traffic Engineering

910 341-3258
910 341-7801 fax
www.wilmingtonnc.gov
Dial 711 TTY/Voice

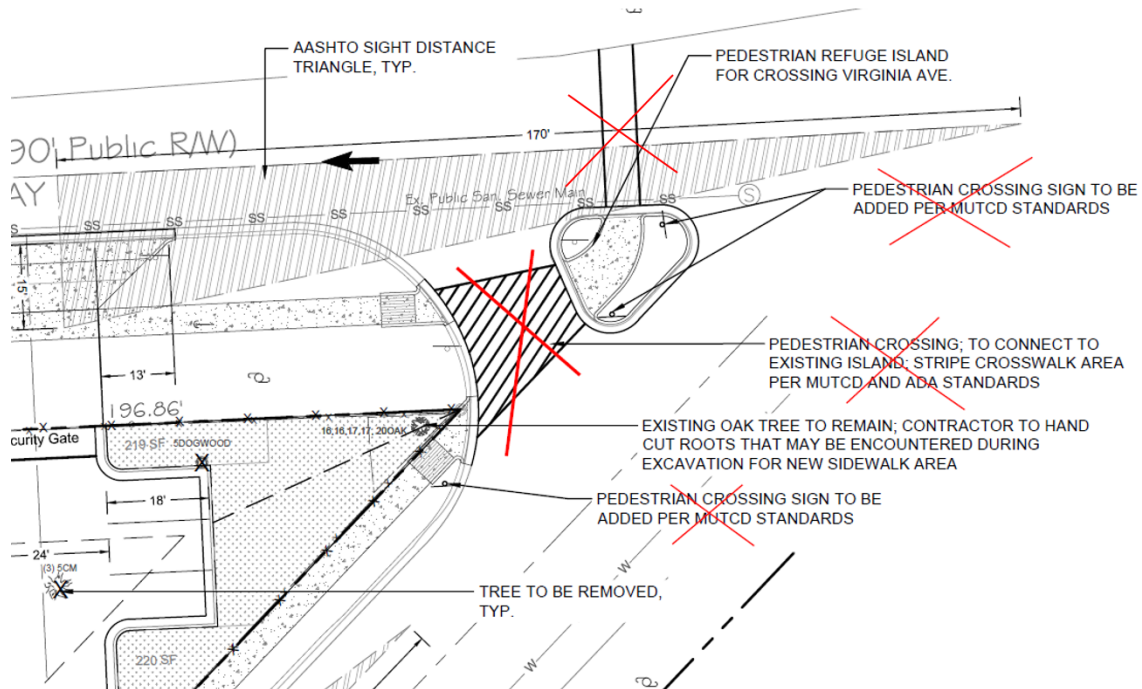
CALIBRATION STATION OFFICES [TRC Plan Review #4]

TECHNICAL STANDARDS – ACCESS (Ramps, sidewalk, and sight distance):

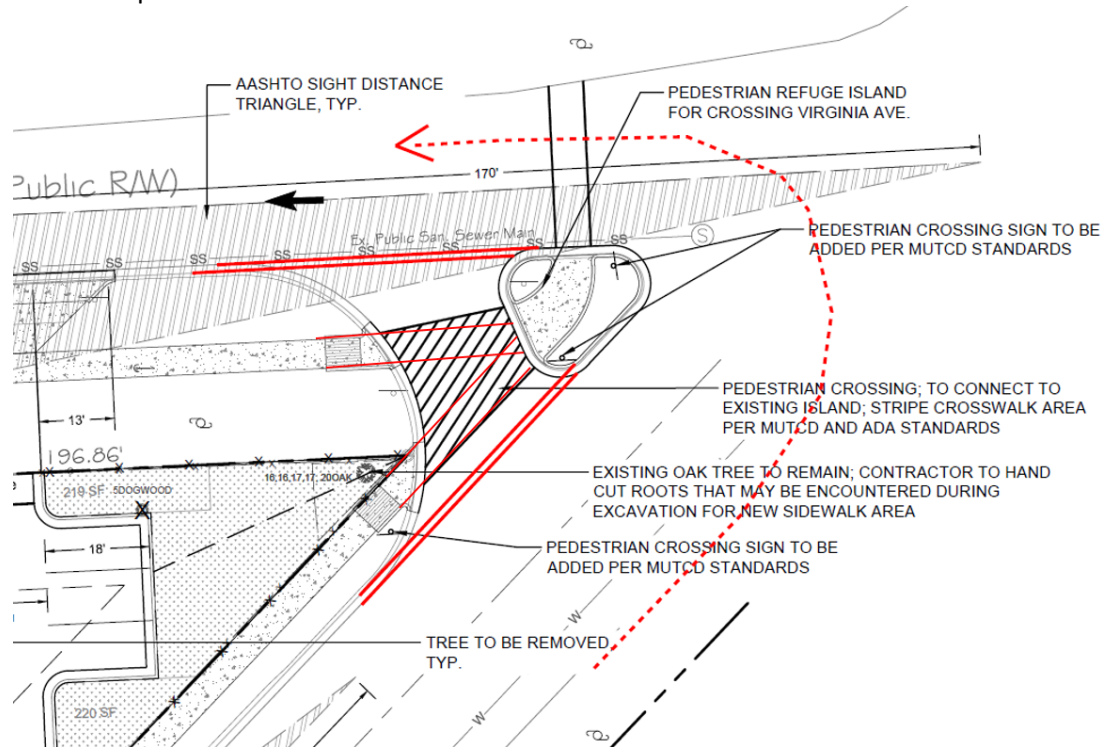
1. Show the City's 20'x70' sight distance triangle for all the driveways as per previous comments. Revise as per below image. Show the City's 46'x46' sight distance triangle at each street corner intersection abutting this property on site and landscape plans. [Sec.18-529(c)(3)CofW LDC]



2. Ramp for the refuge island shall be installed as per ADA/City standards. Show the warning domes for the ramps.
3. Crosswalk pavements markings leading to the Refuge Island and pedestrian warning signage are not required.



4. *Option:* Extend the curb/gutter and sidewalk up to the refuge island. Provide the turning movement analysis into Virginia Ave as shown below. Developer may be required to reshape the refuge island to facilitate the safe turning movement. Area between refuge island and property boundary will still remain as public ROW.



Please let me know if you have any questions or if I can be of further assistance as this development moves through the review process.