



Planning, Development and Transportation

Transportation Planning
305 Chestnut Street
PO Box 1810
Wilmington, NC 28402-1810

910 341-3258
910 341-7801 fax
www.wilmingtonnc.gov
Dial 711 TTY/Voice

DATE: 09.25.2019
TO: ProTrak
FROM: Mitesh Baxi
Traffic Engineering

■ **GARRIS ROAD BOAT STORAGE [TRC Plan Review]**

↻ Initial Review Note ↻

All comments are based on adopted policy documents, specific City of Wilmington Land Development Code (CofW LDC) and City of Wilmington Technical Standards and Specifications Manual (CofWTSSM) requirements in effect at the time of this review. These have been noted after the comment as appropriate for your ease in further research.

The City Engineer may administratively approve dimensional variance requests per LDC Sec. 18-348. If the Applicant feels further interpretation is in order, please contact Transportation Planning directly to discuss in additional detail. Please apply for all administrative variances in writing, an email is acceptable or this may be included on the plan set. Please see Sec. 18-348 of the Land Development Code for the information required to process a variance request.

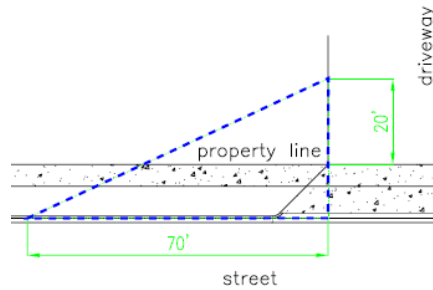


BASE INFORMATION:

- Revise all sheets to accurately illustrate the existing conditions on and surrounding this parcel. Show all adjacent traffic signs, lane configurations, traffic control devices and pavement markings on the site inventory plan. Please refer to the Technical Standards and Specifications Manual (link is below) Ch. VII C.1.a.2. for specific information and distance requirements. Contact Traffic Engineering at 341-7888 if you need assistance locating these elements. <https://www.wilmingtonnc.gov/home/showdocument?id=1910>
- Garris Rd is not a public ROW yet. Please revise the label as proposed public ROW.
- *Responsibility for street and transportation improvements.* When a lot or lots within a subdivision abut an existing public street, highway or thoroughfare, the subdivider shall be responsible for the installation of all improvements to that portion of the street, highway or thoroughfare adjacent to and utilized by that subdivision. [Sec.18-378 (a) CofW LDC]

TECHNICAL STANDARDS – ACCESS (driveway, sidewalk, and sight distance):

1. Proposed driveway shall be City-standard ramp-type. Show appropriate City standard detail(s) on plan. [SD 3-03.3 & 3-03.4 CofWTSSM]
2. Dimension the driveway widths and tapers off Cul-de-sac. [Sec.18-530 CofW LDC]
3. Provide sidewalk detail SD 3-10 on the plan. [Sec. 18-529(b)(2) CofW LDC]
4. Provide curbing detail SD 3-11 on the plan. [Sec. 18-529(b)(2) CofW LDC]
5. Show and apply the City’s 20’x70’ sight distance triangle at each driveway on the site plan and landscaping plan. [Sec.18-529(c) (3) CofW LDC] [Sec. 18-812 CofW LDC]. Add a note indicating that all proposed vegetation within sight triangles shall not interfere with clear visual sight lines from 30"-10'. [Sec.18-556 CofW LDC]



TECHNICAL STANDARDS – PARKING:

6. Dimension the parallel parking spaces. [[Sec. 18-529\(b\)\(2\) CofW LDC](#)]

STREET LIGHTING [[City of Wilmington Street Lighting Policy](#)]:

1. The standard streetlight shall be a DEP designated LED equivalent fixture installed within the recommended range of mounting heights for the specific fixture. The standard streetlight shall be installed on a wooden pole in areas served from overhead facilities and on a fiberglass pole in areas served from underground facilities.
2. A layout for the Standard street lighting has been provided with the review. Minimum of *three* street lights are required for this sub-division. Although, developers may choose to provide any extra lights or ornamental. Any installations above the criteria of Standard street lighting, will be considered as non-standard and has to conform to the City's non-standard street lighting procedure as per the policy.
3. Developers shall bear any installation costs associated with streetlights, if applicable. In areas served from underground facilities, the developers shall pay the one-time underground contribution charge, if applicable.
4. The Planning, Development and Transportation Director or designee and the City Landscape Designer will coordinate plaza plantings and streetlight locations to minimize the obstruction of light by vegetation.

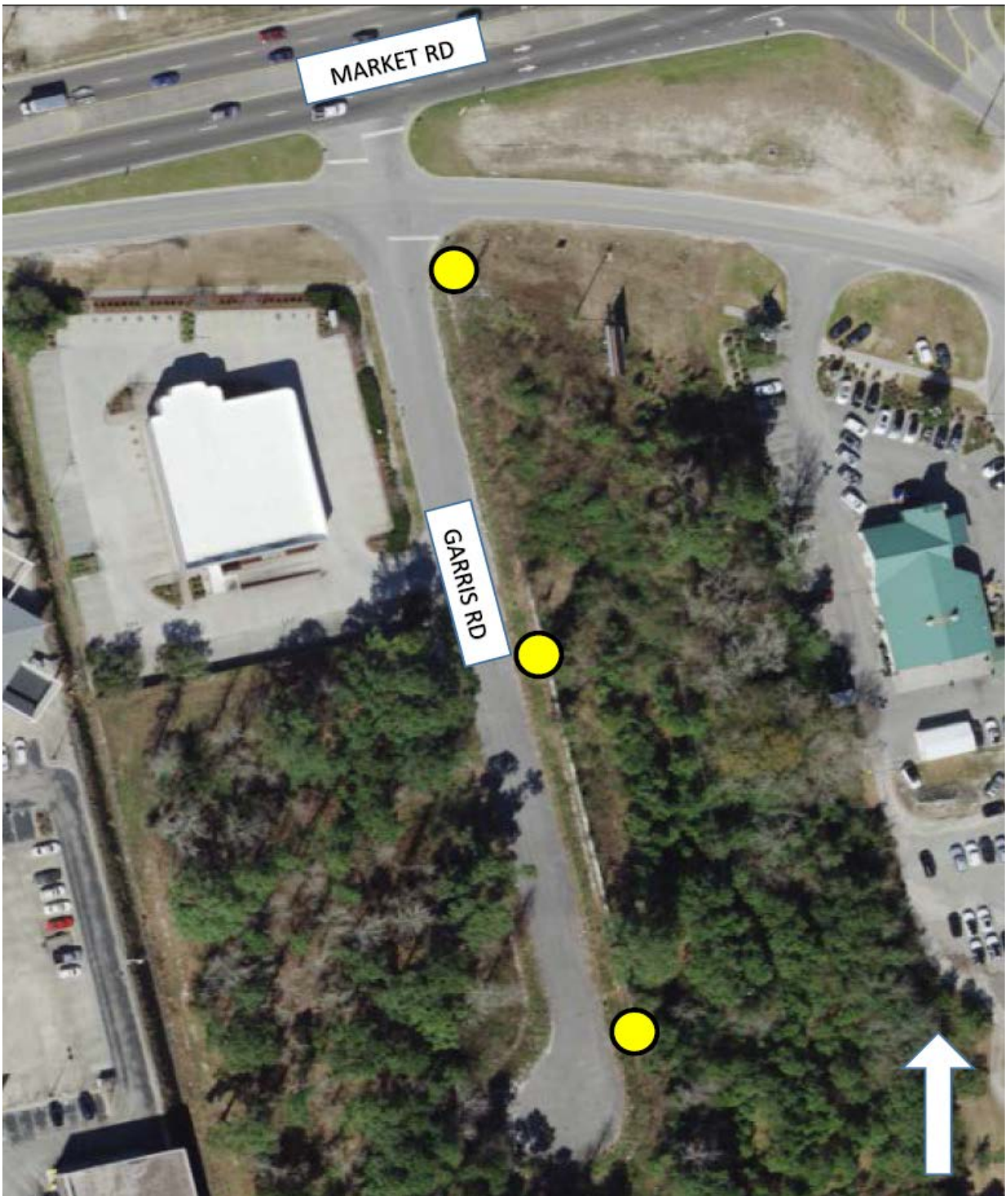
GENERAL NOTES TO ADD TO THE PLAN:

- A. Street trees must be located a minimum of 15 feet from street lights. [[CofW SD 15-17](#)]

MISCELLANEOUS:

- ❖ Contact Traffic Engineering at (910) 341-7888 to discuss street lighting options.
- ❖ We will reserve comments on the parking lot, driveway geometry and other technical issues until a full construction drawing is submitted.

Please let me know if you have any questions or if I can be of further assistance as this development moves through the review process.



Garris Road Standard Street Lighting Plan

09/25/2019

1. Developers shall bear any installation costs associated with streetlights, if applicable. In areas served from underground facilities, the developers shall pay the one-time underground contribution charge, if applicable.
2. Streetlights will be reviewed through the subdivision process and must meet criteria established in City's Street Lighting Policy.
3. All street lights shall be installed within the public ROW.
4. Street trees must be located a minimum of 15' from street lights [SD 15-17 of CofWTSSM].

 Proposed locations of minimum required 3 LED 50.