



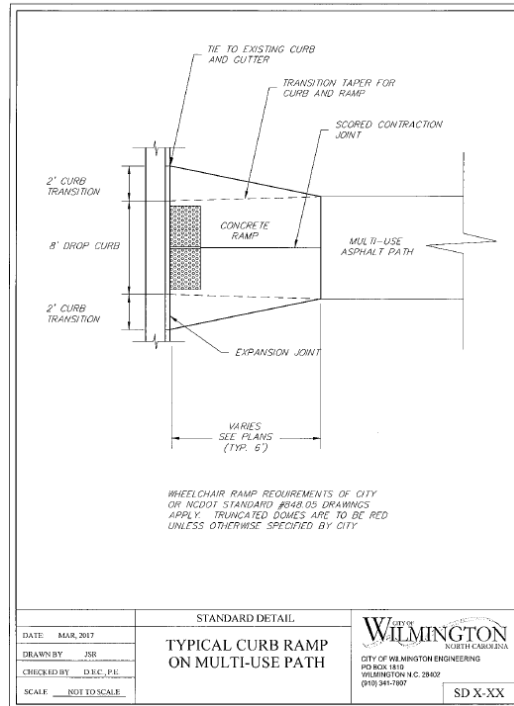
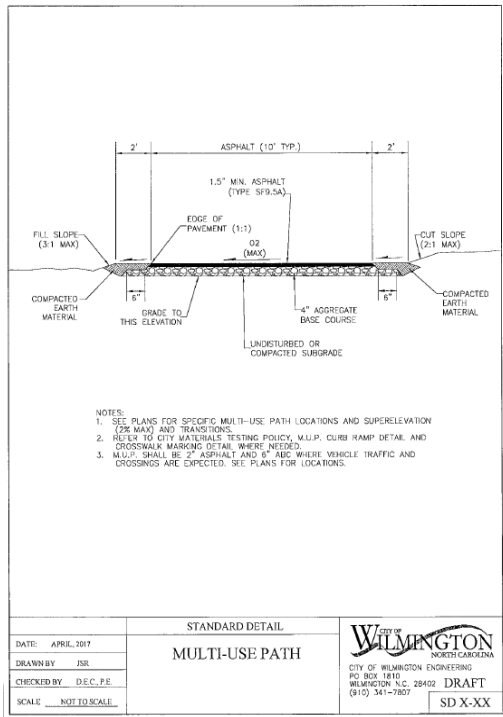
DATE: 07.19.2019
TO: ProTrak
FROM: Bill McDow
Transportation Planning

910 341-3258
910 341-7801 fax
www.wilmingtonnc.gov
Dial 711 TTY/Voice

ECHO FARMS PARK [TRC Plan Review #5]

TECHNICAL STANDARDS – ACCESS (driveway, sidewalk, and sight distance):

1. Please revise labels on the plan (sheet C-2.6), from “Proposed 10’ Wide Asphalt Walking Trail” to “Proposed 8’ Wide Asphalt Walking Trail”.
2. The proposed section/ site plans do not show the correct detail for the 10’ Asphalt Multi-Use Path on sheet C-3.1. The incorrect section can be removed from the plans. The path must have correct shoulder, materials and slope. An example of the City Multi-Use path is shown below.



3. No Further Comments.