



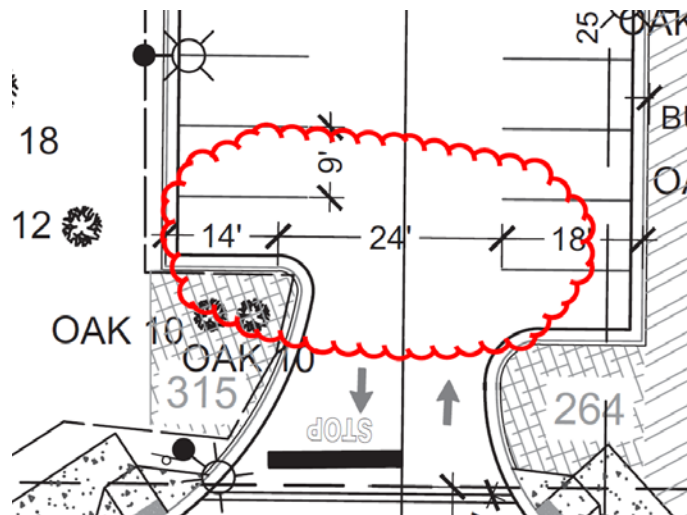
**DATE:** 03.17.2020  
**TO:** ProTrak  
**FROM:** Mitesh Baxi  
Traffic Engineering

910 341-3258  
910 341-7801 fax  
www.wilmingtonnc.gov  
Dial 711 TTY/Voice

■ **CROSSROADS INFINITI [TRC Plan Review #3]**

**TECHNICAL STANDARDS:**

1. Please verify and revise the dimensions for the rear parking facility.



2. Show the typical handicap sign detail on the plan as per ADA and City standards. [Sheets A1 of 5 and A2 of 5, CofW Sign Specification]  
<https://www.wilmingtonnc.gov/home/showdocument?id=3940>

Please let me know if you have any questions.